

Safety

Wisdom

Intelligence

**Product
instruction**

BP02EU Pottery Wheel

Dear users:

**Thank you for your support to Jingdezhen Baitaohui
Ceramics Equipment Co., Ltd.!**

**In order to better meet the needs of users and increase their
understanding of the product, our company has compiled a manual
about the product of the pottery wheel, so that users can understand the
product in time when they encounter various problems during the use
of the product.**

Best wishes!

Jingdezhen Baitaohui Ceramics Equipment Co., Ltd.

Catalog

- 01 **Product introduction**
- 02 **Installation instruction**
- 03 **Instruction for use**
- 04 **Daily maintenance and safety precautions**
- 05 **Warranty (replacement) period**
- 06 **After-sale service**
- 07 **List of Packing**
- 08 **Inspection report**

01 About the product

Product introduction

- This equipment adopts aesthetic concept design.
- Low-voltage safety control switch, automatic power-off protection device.
- Using international certified components and electronic parts on the equipment , which improve the stability and service life.
- Low noise during operation and stable turning of the wheel.
- The foot pedal adopts patent-protected Hall technology and has a service life of up to 300,000 times.
- The water tray adopts a patent-protected magnetic structure to meet the user's requirements for quick disassembly and assembly.

Product Image





About the product

this appliance can be used by children aged from 8 years and above and persons with reduced physical, sensory or mental capabilities or lack of experience and knowledge if they have been given supervision or instruction concerning use of the appliance in a safe way and understand the hazards involved

- children shall not play with the appliance



01 About the product

Main Specifications







Brand	Baitaohui
Model	BTH-ILP-BP02EU
Rated voltage	AC 230V/50Hz
Rated power	500W
Rotating speed	0-300r/min
Turntable Dimensions	315mm (12.4 in)
Wheel head direction	CW/CCW
Maximum load	88 lbs
Noise	≤46dB
Dimensions	L 68* W64 x H48-58cm (Adjustable height)
Net Weight	31kg ≈68.34lbs



Installation introduction

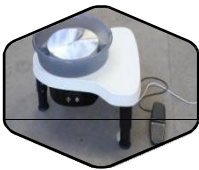
Environmental requirements

- This equipment should be placed on a cool, ventilated, dry, dust-proof and level ground 
- The user must follow the electrical safety standards for wiring and installation. Single-phase electricity must be powered by a grid with a grounding wire; this equipment must be grounded before it can be put into operation. It is strictly forbidden to operate this equipment without a grounding wire. The power supply voltage is single-phase AC230V, and the frequency is 50HZ 
- Need to adapt to the environment temperature 0-50 degrees Celsius, non-corrosive and no strong electromagnetic field radiation occasions 
- The work site of this equipment should be kept well ventilated and avoid the motor overheating and burning the motor 



02 Installation instruction

Installation steps



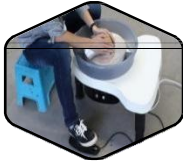
Find a resettlement site
Wide space is suitable for the place where works and tools are placed



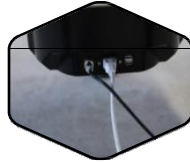
Check product accessories
foot pedal, water tray ,Instruction Manual and all the accessories are complete



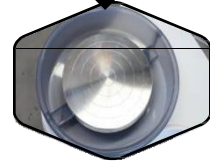
Adjust the height of the feet
Adjust to a comfortable height for the operator to lock and fix the feet



Energize power trial operation
Turn on power to run the device



Accessory connection Use foot pedal connecting line , power line connect to the pottery wheel



Water tray installation
Detachable Magnetic- type water tray, Two- way one-click deduction

Notice

- This equipment is only suitable for pottery operations. It is not allowed to use the equipment for other purposes. It is not allowed to use brutal operations when using the equipment, and it is not allowed to damage the equipment such as hammering, beating, smashing, etc. at any time.

03 Instruction for use

Using steps



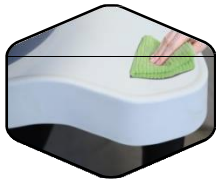
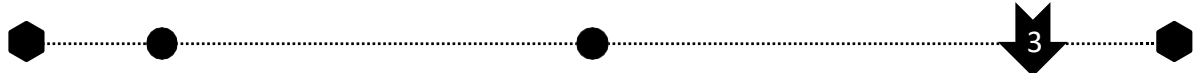
Power on
Turn on the power



Button adjustment
Switch power on and choose forward or reverse



Throwing on top of the wheel
Use the foot pedal to control the speed



Equipment cleaning
After the work is finished, clean the water tray in time and wipe it gently with a damp tablecloth



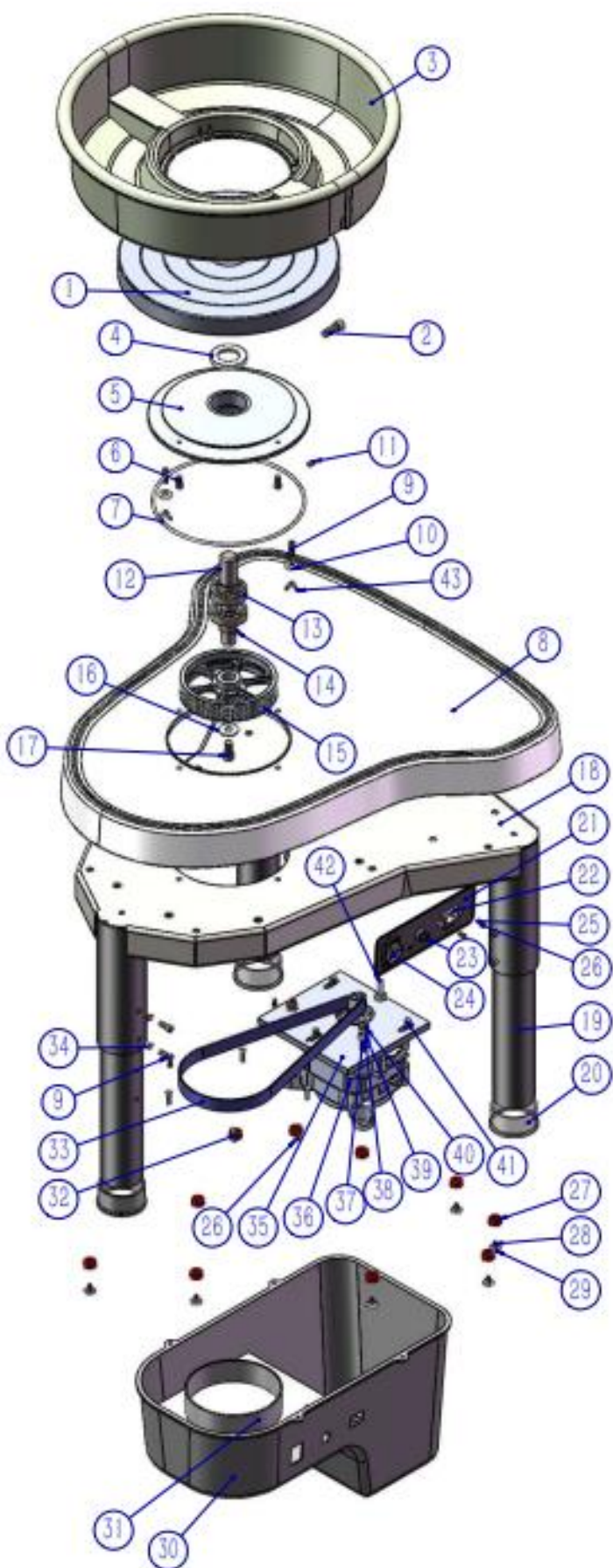
Take down the works
Gently take down the work and place it on a clean and flat bat



Disconnect the power
Prevent damage to the work caused by touching the foot pedal by mistake when picking up the work

Notice

- When this equipment is in use, it is forbidden to place any objects on the power cord. Please do not place the power cord where people move around.
- During equipment operation, **it is strictly forbidden to cut off the power supply or press the emergency brake switch at will in non-emergency situations.**
- When the equipment is not in standby, it is recommended to turn off the power.
- After the equipment stop running, the mud surface of the turntable needs to be cleaned to wipe off the water stains on the turntable, to avoid corrosion of the turntable caused by mud and water stains; during the cleaning process, the power supply must be cut off before cleaning , **do not directly use water to avoid damaging electrical parts**, can use wipe it with a damp cloth.



- 1 : Aluminum plate
- 2 : Imperial Hexagon socket head bolt 3/8-16x1
- 3 : Water tray
- 4 : Skeleton oil seal
- 5 : Aluminum bearing seat
- 6 : Imperial Hexagon socket head bolt 1/4-20x1/2
- 7 : O-ring $\phi 212 \times \phi 204.9 \times 3.55 \text{mm}$
- 8 : Panel
- 9 : Imperial Hexagon socket head bolt 1/4-20x5/8
- 10 : Flat washer 1/4 Wide type
- 11 : Internal hexagonal headless bolt 1/4-20*5/16
- 12 : principal axis
- 13 : Deep groove ball bearing 6205
- 14 : Axial snap spring- $\phi 25$
- 15 : Aluminum belt pulley
- 16 : Flat washer M10x28x2
- 17 : Imperial Hexagon socket head bolt 3/8-16x3/4
- 18 : Rack
- 19 : Adjustable feet tube
- 20 : Foot mat
- 21 : PVC panel sticker
- 22 : Power connector
- 23 : Forward and reverse switch
- 24 : Waterproof power switch
- 25 : Outer hexagonal nut 5/32-32
- 26 : Cross round head bolt 5/32-32x3/8
- 27 : Isolation column $\phi 29 \times \phi 18 \times \text{H}9$
- 28 : Cross mushroom head self-tapping screw M5x14
- 29 : Flat washer M5x16x1.5
- 30 : Motor electric cover
- 31 : controller
- 32 : Cross round head self tapping screw M5x20
- 33 : Rubber multi wedge belt
- 34 : Spring washer 1/4
- 35 : Motor mounting plate
- 36 : Variable frequency motor
- 37 : External hexagonal bolt 5/16-18*2-1/4
- 38 : Flat washer M8
- 39 : Spring washer 5/16
- 40 : Outer hexagonal nut 5/16-18
- 41 : External hexagonal bolt 5/16-18*1-1/4
- 42 : Rubber head screw M6x20
- 43 : Butterfly nut 1/4-20

A hexagonal icon with a double-line border, containing the number '04' in a bold, black, sans-serif font.

Daily maintenance

- ◆ Check the foot pedal every day to make sure that it response sensitively and return clearly Stable operation
- ◆ Check if there are damage in power cord and whether the electrical wiring terminal is loose, then it need to be tightened if becomes loose
- ◆ Clean equipment panel and control switch regularly to keep clean and dry
- ◆ It is strictly forbidden to overload the equipment, which is not conducive to the service life
- ◆ Pottery wheel machine must be check the fasteners of the equipment to ensure if there are any loosening and eliminate every three months
- ◆ In order to avoid muddy water entering the equipment during the drawing process and causing damage to the electrical components, please properly place the water tray before throwing.
- ◆ The emergency stop switch must be pressed after the equipment has stopped, and then cut off the power; it is forbidden to cut off the power in a non-emergency state
- ◆ Please do not disassemble and assemble the drawing machine and controller privately, if necessary, please contact our customer service staff
- ◆ When cleaning the machine, please wipe it instead of washing it with water, to prevent water from entering the interior and damaging the electrical components
- ◆ When the equipment is not in use, the power must be turned off to prevent accidents



Warranty (replacement) period

Except for artificial or abnormal use of damaged billet, we offer three guarantees for this equipment, the warranty period is three years (the gift items are not covered by warranty), if the equipment fails, please call our company in time and explain the cause of the failure

Classify	Parts	Warranty (year)
Electrical part	Pottery wheel host	1
	BLDC direct drive motor	5
	Power switch	1
	Leakage protection switch plug	1
	Inverse switch	1
	Power Cord	1
Mechanical part	Turntable	1
	Water tray	1
	Foot pedal	1



06 After-sale service

Company name:
Jingdezhen Baitaohui Ceramic Equipment Co.,Ltd.

Company address:
Building B9, Acceleration Base, Changnan New District, Jingdezhen City, Jiangxi Province, China

After-sales hotline :
+86-18607983455

Company website: www.jdzbth.com
Email address: xieweifeng@jdzbth.com

instructions are also available in an alternative format such as on a website or on request from the user in a form

07 List of Packing

The product you purchased includes the following content:

No	Parts	Quantity
1	Pottery wheel	1
2	Foot pedal	1
3	Water tray	1
4	Instruction book	1
5	Warranty card	1
6	Power cord	1
7	Aluminum disc removal wrench 5/16	1
8	Foot tube removal wrench 3/16	1



Inspection report

Inspection items		Inspection requirements	Test results
Main structure and dimensions		According to the drawing structure and requirements	✓
Welded appearance quality		The weld is well formed, the transition is smooth and straight, the joint is good, there is no arc pit, welding tumor, surface slag inclusion, and incomplete penetration and incomplete fusion are not allowed	✓
Sanding and rust removal quality		After removing rust, oil, burrs, etc., the weld must be smooth and uniform after polishing	✓
Paint	Anti rusting	Coated and evenly coated, the amount of curing agent is moderate, no sagging, shelling, bonding, etc	✓
	Paint quality	Uniform color, gloss, no bubble cracks, etc	✓
Electrical control		According to the functions and requirements of electrical design drawing	✓
Indications and accessories		The marking is complete and the accessories are complete	✓
Performance testing		The pedal is flexible and reliable, the plug-in is fastened and reliable, and the relevant parameters meet the requirements of product design	✓

This product has been inspected and qualified and approved for sale !



Warranty card

Dear user,

thank you for purchasing the pottery equipment of Jingdezhen Baitaohui Ceramics Equipment Co., Ltd. In order to better serve you, after purchasing the product, please carefully read, fill in and properly keep this warranty card.

Customer name		Phone number	
Model no		Product id	
Date of purchase		Purchase channel	
User Address			
Repairng Record	Repairing Date	Cause of failure and repair solution	

Product warranty, after-sales service terms

When the product needs to be returned to the factory for repair, please contact the after-sales customer service first, this warranty card and the purchased product, please properly send (send) back to our after-sales service department.

Notes:

This equipment except for man-made or abnormal use damage, under normal use and maintenance of the failure, after verification is true, from the date of purchase of the product, the whole machine warranty for three years. If the purchase voucher is lost, the warranty period starts from the date the product was shipped.

The following cases will not be repaired free of charge:

Damage to the device due to incorrect installation.

Damage to equipment due to irresistible natural disasters.

Damage to the device caused by improper operation according to the instructions.

Equipment damage caused by self-dismantling and modified parts.

The final interpretation right of the contents of this warranty card belongs to Jingdezhen Baitaohui ceramic Equipment Co., Ltd.

With the advancement of science and technology and the improvement of product performance, if there are any improvements in the manual in the future, there will be no further notice, please understand!



Jingdezhen Baitaohui Ceramic Equipment Co.,Ltd.

**Building B9, Acceleration Base, Changnan New District,
Jingdezhen City, Jiangxi Province, China**

Email: xieweifeng@jdzbth.com
